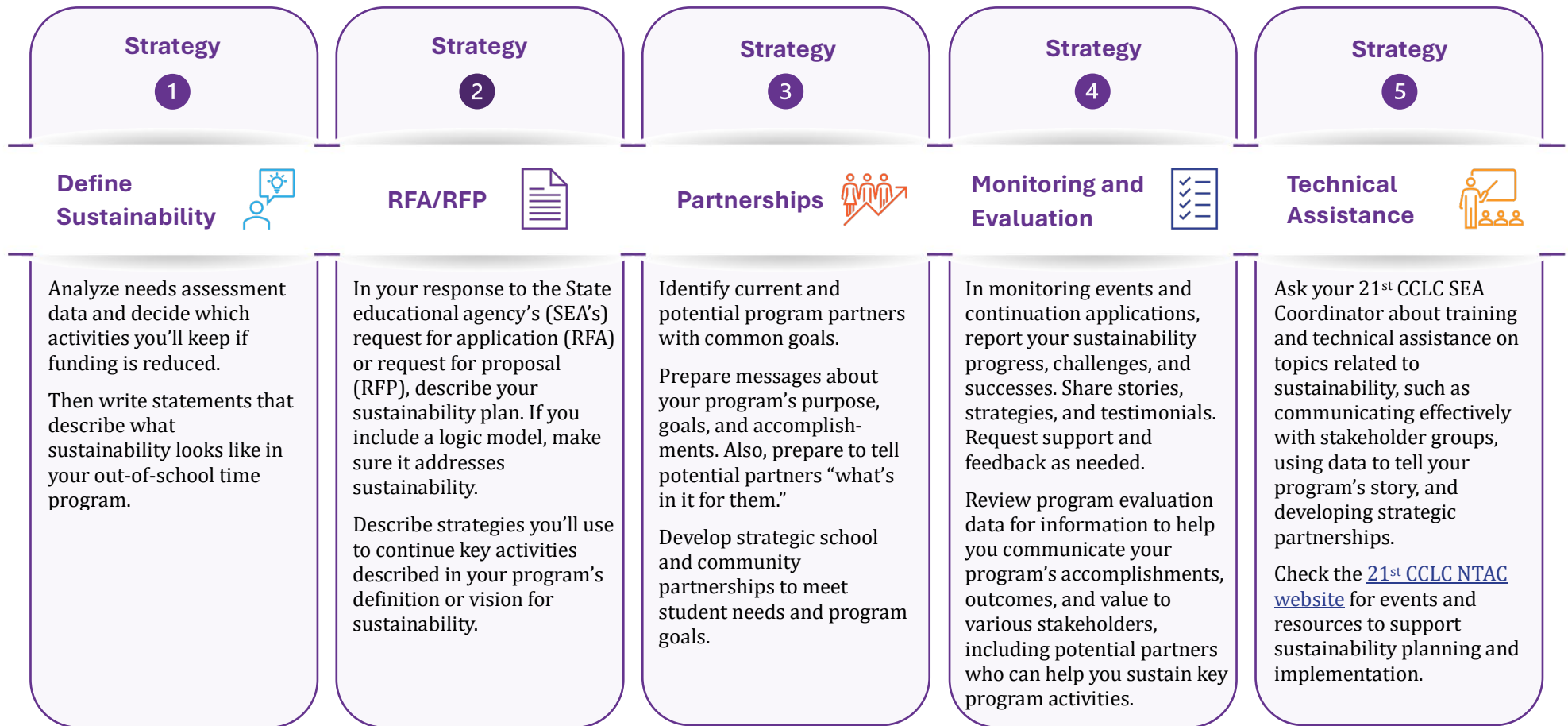


## Sustainability at a Glance for 21<sup>st</sup> CCLC Program Directors

**What to do:** Use this job aid as a reminder of strategies you can use to plan and prepare for continuation of key program activities beyond your current 21<sup>st</sup> Century Community Learning Centers (21<sup>st</sup> CCLC) grant funding cycle.

**Why it matters:** Continuing a program (or elements of it) if funds are reduced is more likely if sustainability planning is built into ongoing processes and communications.



## Sustainability: What the Elementary and Secondary Education Act (ESEA) Says

The [federal law that established the 21<sup>st</sup> CCLC program](#) is Title IV, Part B of the ESEA, as amended by the Every Student Succeeds Act (ESSA) (20 U.S.C. 7171-7176). The legislation addresses the principle of sustainability as follows:

### ESEA Section 4203(a)(8)(B)

The State educational agency “will require each eligible entity seeking such an award to submit a plan describing how the activities to be funded through the award will continue after funding under this part ends.”

### ESEA Section 4204(b)(1)

To be eligible to receive a subgrant under this part, an eligible entity shall submit an application to the State educational agency at such time, in such manner, and including such information as the State educational agency may reasonably require.

### ESEA Section 4204(b)(2)

(2) CONTENTS—Each application submitted under paragraph (1) shall include— ... **(A)** a description of the activities to be funded, including ... **(K)** a description of a preliminary plan for how the community learning center will continue after funding under this part ends.

## Sustainability: What the U.S. Department of Education’s Non-Regulatory Guidance Says

The U.S. Department of Education’s [non-regulatory guidance](#) addresses sustainability as follows:

### **D-5. How might a subgrantee coordinate other Federal, State, and local programs that have related purposes?**

Each local application must address how the applicant will coordinate with other Federal, State, and local programs and make the most effective use of public resources. (Section 4204(b)(2)(C)). The Department strongly encourages the SEA to require applicants to identify other sources of related funding and to describe, in their application, how these resources will be coordinated to offer a high-quality, sustainable program.



## Sustainability: What 21<sup>st</sup> CCLC Program Subgrantees Need to Know About Monitoring

The U.S. Department of education monitors to ensure that SEAs comply with legislative requirements, including requirements for program sustainability planning, and hold subgrantees accountable. SEAs, in turn, monitor subgrantees.

### The SEA monitors subgrantees for sustainability planning.

- The SEA must require applicants to submit a plan describing how the community learning center will continue after the 21<sup>st</sup> CCLC funding ends. **§4203(a)(8)(B)** and **§4204(b)(2)(K)**
- The SEA is required to monitor that subgrantees describe a preliminary plan for how the community learning center will continue after funding under this part ends. **§4204(b)(2)(K)**

### Be prepared to provide information about your program's sustainability plan during SEA monitoring.

- Check your SEA's 21<sup>st</sup> CCLC program RFA/RFP for sustainability requirements and indicators.
- Document your program sustainability plan and the rationale for any changes or updates to the plan.
- Keep a record of your sustainability progress, strategies, challenges, solutions, and successes.

## Takeaways: What's Expected of 21<sup>st</sup> CCLC Programs

### Planning

Out-of-school time programs that receive 21<sup>st</sup> CCLC funding are expected to have a plan for continuing at least some of their current activities when 21<sup>st</sup> CCLC funding ends.

### Data-Based Decisions

Including sustainability planning from the beginning of the grant award, and use a needs assessment and/or logic model to inform which program elements should be sustained. Be realistic about which program elements can be sustained, and determine the correct data and metrics to gather to measure progress.

### Strategic Coordination

Coordinating with other organizations and public agencies and seeking additional funding sources are two activities 21<sup>st</sup> CCLCs may pursue during their funding cycle to ensure that valuable aspects of the program can continue beyond the funding cycle.



## Factors That Influence Program Sustainability



### Funding

- Realistic program budget
- External funding
- Multiyear funding
- Multiple sources
- In-kind contributions



### Program Design

- Aligned to clear program goals and student needs
- Vision/mission driven
- Evidence based
- Policy compliant
- Inclusive; incorporates community culture and values
- Flexible and adaptable



### Partners

- Stakeholders (local, State, national)
- Range of roles (e.g., funder, resource provider, program champion) and engagement levels (ongoing vs. ad hoc)
- Shared goals
- Clear agreements or memorandums of understanding (MOUs)



### Community

- Parent/family support
- Support of schools, local agencies, policymakers, and community-based organizations



### Personnel

- Strong leadership
- Qualified staff
- Minimal turnover
- Effective training and professional development



### Evaluation

- Continuous improvement
- Demonstrated value



### Planning

- Sustainability planning begins with RFA/RFP response
- Tied to logic model
- Specific
- Data/goal driven
- Long-range vision



### Communications

- Highly visible
- Strategic
- Multifaceted
- Inclusive of diverse stakeholders (e.g., multilingual speakers, community and faith-based organizations)

This resource was developed in 2024 by the Nita M. Lowey 21<sup>st</sup> Century Community Learning Centers (21<sup>st</sup> CCLC) National Technical Assistance Center (NTAC), funded under a grant from the U.S. Department of Education (Department) and administered by Synergy Enterprises, Inc. under Cooperative Agreement No. 287E230009 with the Department's Office of Elementary and Secondary Education. Opinions expressed herein do not necessarily reflect the position or policy of the Department, nor does mention of trade names, commercial products, or organizations imply endorsement by the Department or the federal government. This resource is in the public domain and is available at [21stcclcntac.org](https://21stcclcntac.org). Authorization to reproduce it in whole or in part is granted.

