



21ST
CCLC

NTAC

National Technical
Assistance Center



21ST
CCLC **NTAC**
National Technical Assistance Center



Reignite: Strategies for Reengaging Disengaged Youth

September 13, 2024

This resource was developed in 2024 by the Nita M. Lowey 21st Century Community Learning Centers (21st CCLC) National Technical Assistance Center (NTAC), funded under a grant from the U.S. Department of Education (Department) and administered by Synergy Enterprises, Inc. under Cooperative Agreement No. 287E230009 with the Department's Office of Elementary and Secondary Education. Opinions expressed herein do not necessarily reflect the position or policy of the Department, nor does mention of trade names, commercial products, or organizations imply endorsement by the Department or the federal government. This resource is in the public domain and is available at 21stcclcntac.org.

Authorization to reproduce it in whole or in part is granted.



Presenters



Brittney
Subgrantee TA Liaison



Shanika Peck
Senior TA Liaison



21st CCLC NTAC Vision and Mission



Vision

All Nita M. Lowey 21st Century Community Learning Centers SEA Coordinators and professionals obtain the knowledge and skills to implement programs that engage and empower students and their families to build lasting success as lifelong learners.

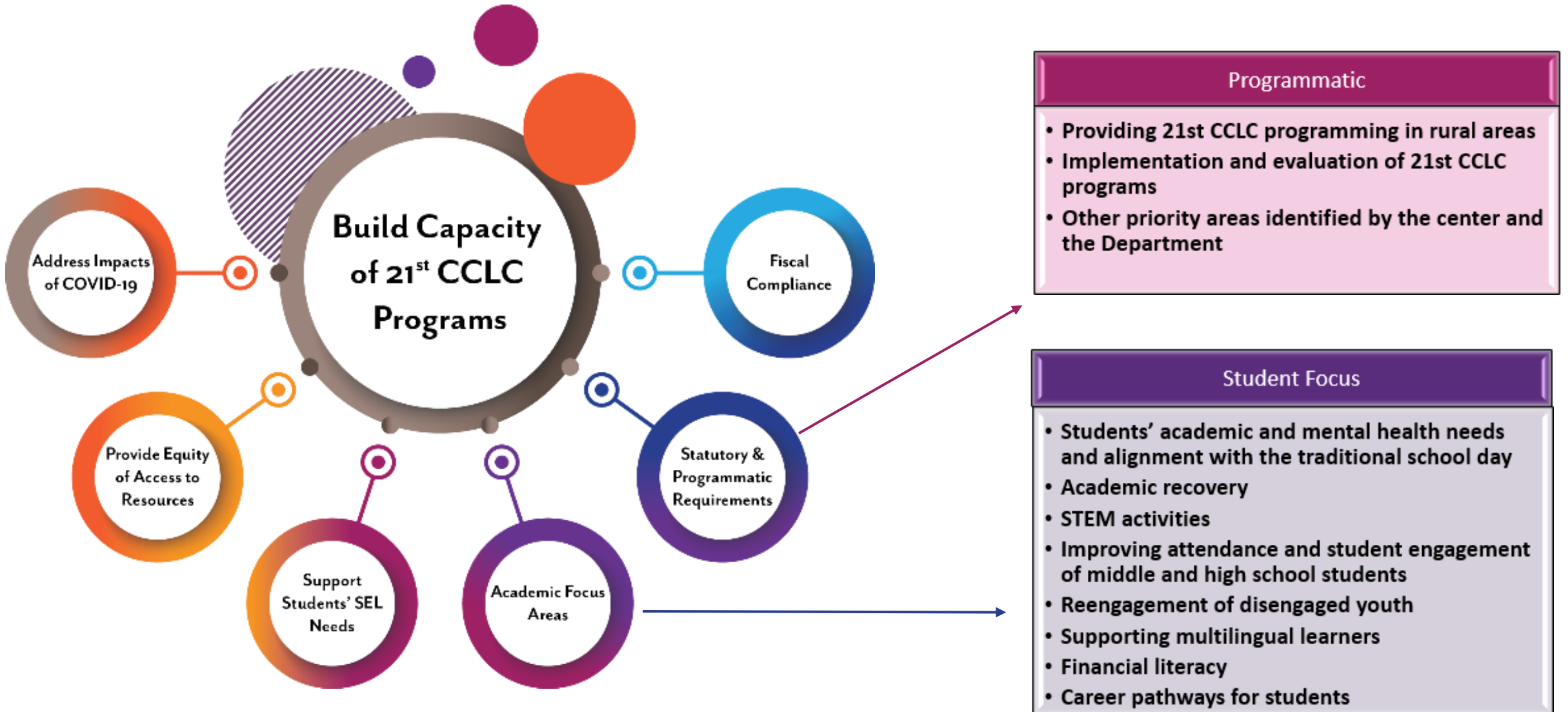


Mission

The 21st CCLC National Technical Assistance Center provides best practices, evidence-based resources, and professional learning opportunities to build the capacity of 21st CCLC stakeholders to support underserved youth and their families.



21st CCLC NTAC Priorities



Objectives

- Define student engagement and disengagement and identify contributing factors
- Develop strategies for reengaging students who disengage or are at risk of disengagement
- Expound ways to engage people and resources to help you support students who disengage or at risk of disengagement



Engaged

Disengaged

Challenged

Disinterest

Questioning

Inattentive

Attention

Bored

Present

Absent



Contributing Factors

External Factors

- Competing priorities
- Mental health
- Family commitments
- Family support
- Transportation needs

Internal Factors

- Lack of developmental relationships
- Lessons and activities disconnected from student interests and needs
- Inhibiting program culture
- Transportation needs





Program Components

- Nurturing social, emotional, intellectual development
- Responding to students' needs and interests
- Addressing goal of healthy development and life success
- Family engagement
- Connection to school day
- Community engagement and partnerships





Engagement Strategies



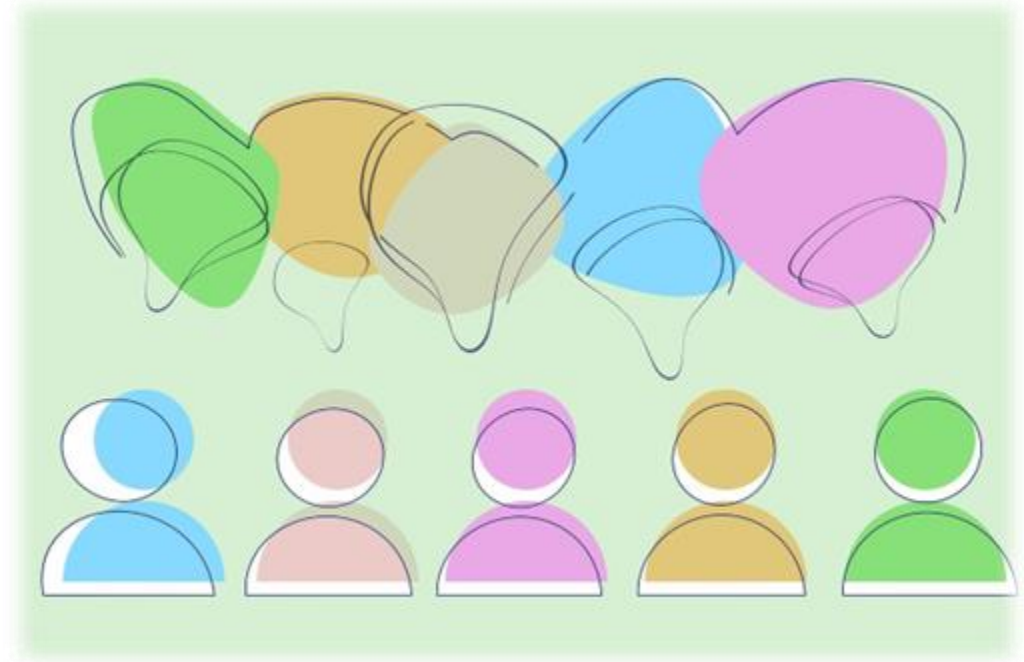
Build and Improve Developmental Relationships

- Take the time
- Withhold judgement
- Representation and allyship
- Be empathetic
- Provide resources and support
- Mentoring relationships



Assess and Support Student Interests and Needs

- Survey
- Focus group
- Flexible scheduling
- Feedback opportunities



Hands-on, Authentic, Relevant Learning Opportunities

- Project based learning
- Post secondary support
 - ✓ Career pathways
 - ✓ College prep
 - ✓ Training programs
- Life skills



Diverse Program Offerings

- Academic support
 - ✓ Tutoring
 - ✓ Homework help
- STEM
- Sports
- Arts



Leadership Opportunities

- Leadership roles
- Involve in decision making



Family Engagement

Communication

- Personal
- Frequency and follow-up
- Method
- Clarity

Events

- Relevancy
- Participatory
- Student showcase

Advisory Boards/Parent-Teacher Advisory

- Involvement with decisions
- Help with planning



School Engagement

- Connect with school day staff
- Align lessons and activities
- Joint planning
- Data sharing
- School day staff participation



Community Engagement



Local
Partnerships



Service
Projects



Guest
Presenters



Engagement Chutes and Ladders

1. Each player takes a token to represent that teamwork. Place tokens on START.
2. Roll dice to determine who goes first. Lowest number goes first.
3. Everyone shares 1 engagement strategy that they have used or seen used with success. Upon sharing make your first move into space 1.
 - A. When you land on a LADDER: Move to the top of the ladder.**
 - B. When you land on a CHUTE: Move down the chute and follow instruction in step 4.**
4. Chutes = *Disengagement Situation Card*:
 - A. When you land on a chute, pull a *Disengagement Situation Card* and share out loud.
 - B. Together choose an engagement strategy or strategies from the handout.
 - C. Make note of the situation and your choice strategy on the worksheet.
 - D. Once you have an engagement strategy, move 1 space forward.
5. The game is finished when you've reached the FINISH square.



What do
successful
programs
look like?





NY ROS Feedback Form



STAY INFORMED



21ST
CCLC **NTAC**
National Technical Assistance Center



www.21stcclcntac.org



info@21stcclcntac.org



Newsletter



@21stCCLC_NTAC



21stCCLC NTAC